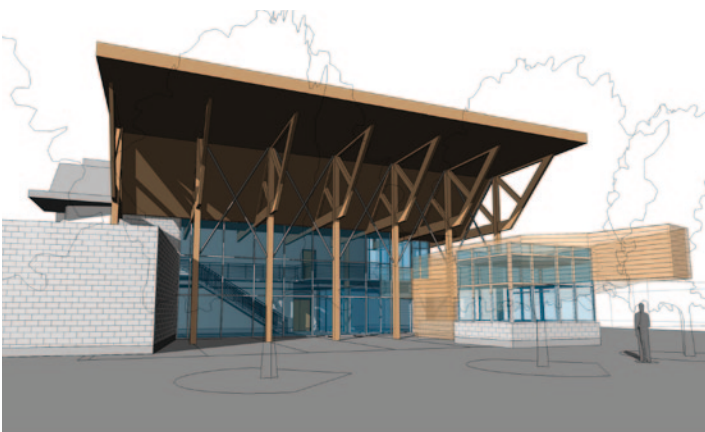
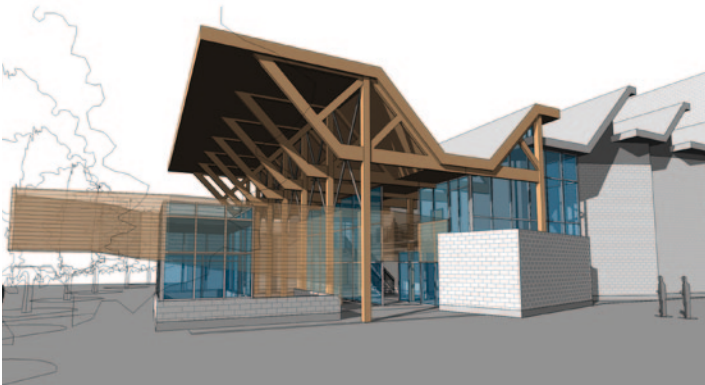
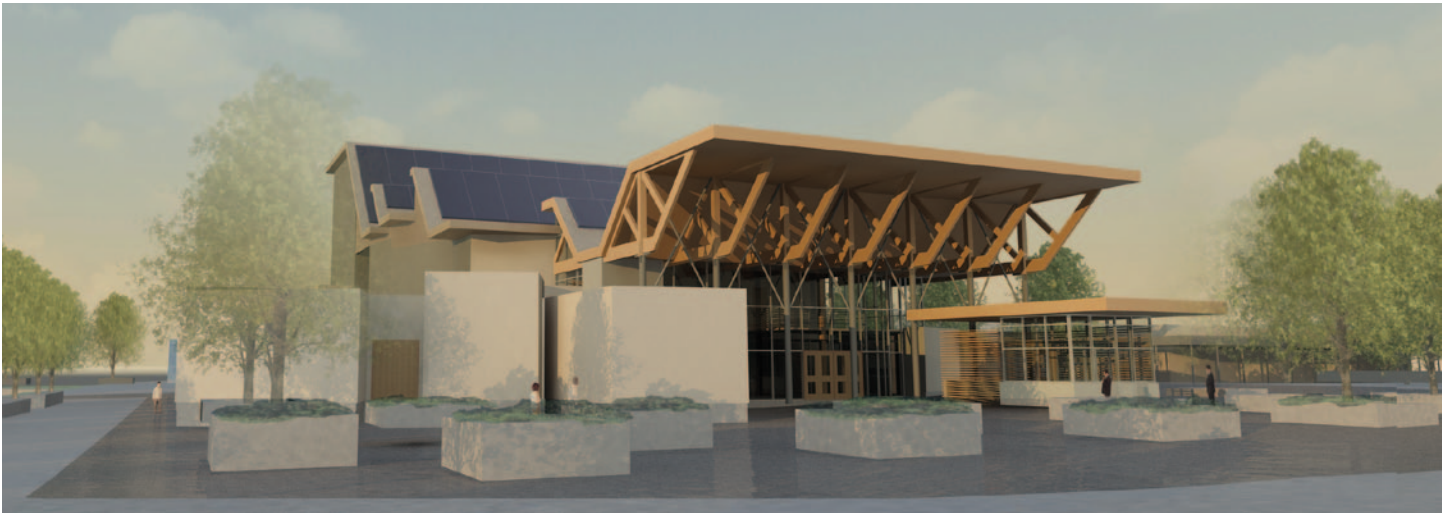


PATRICK HENRY THEATER



The Patrick Henry High School Modernization is a comprehensive revitalization project seeking to transform the community through collaborative use. The scope includes the addition of a 500-seat Performing Arts Theater, campus-wide modernization and major stadium upgrades.

With plans to provide joint usage with local, private and community college theater and orchestra groups, the Patrick Henry High School Performing Arts Theater grants students direct access to professional practice, sparking a much needed district desire for applied learning in the arts. The theater holds full capability to house both musical and theatrical venues. Another major component of the theater, the Career Technical Center, allows students and local groups alike to utilize the most contemporary performing arts technology, and provides infrastructure for future growth in the arts.

Patrick Henry's new stadium will provide students and the local community access to state-of-the art track and field facilities. New Football, Soccer, Track and Field, Baseball and Softball fields will provide the school with a fully competitive venue, complete with upgraded stadium seating, main entrance and support facilities.

Square Feet: 29,393
Estimated Construction Cost: \$10,704,097
San Diego Unified School District